

GLOBE TEST EQUIPMENT

LIQUID TEST PUMPS



ATEX II cat.2

ADVANTAGES

GDc T4

Globe Airdriven Testpumps incorporated in the Globe Test System are Piston type pumps. These pumps give a lot of advantages:

- Simply and easy to operate just by using a ballvalve and pressure regulator.
- Intrinsically safe for explosion proof environments, all Globe pumps are certified according The European Explosion Directive Atex II cat 2 G&D T4.
- Proportional control in flow and pressure, over the complete characteristic of the pump.
- Robust and compact
- Portable
- Reliable

APPLICATIONS

CONTENTS	PAGE
ADVANTAGES AND APPLICATION	1
PUMPS	2
SYSTEMS APU UNICUB	3
STSTEMS APU MK 7	4

AIRDRIVEN LIQUID PUMPS

- Pressure Testing of hoses
- Pressure Testing of tubes and pipelines
- Pressure Testing of pressure vessles/tanks
- Pressure Testing of valves
- Pressure Testing of petrochemical Installations

Model	Ratio	MWP in bar (MWP psi)	Volume/Stroke cc (in3)	Capacity ltr/min (in3/min)	Liquid inlet connection	Liquid outlet connection
UNICUB-A	1:4	26 (380)	28 (1,68)	14 (850)	½"BSP	½"BSP
UNICUB-B	1:12	70 (1010)	10 (0,60)	5 (305)	½"BSP	½"BSP
UNICUB-C	1:26	157 (2280)	4,5 (0,27)	2,4 (146)	½"BSP	½"BSP
UNICUB-D	1:47	275 (3990)	2,5 (0,15)	1,4 (85)	½"BSP	½"BSP
UNICUB-E	1:68	430 (6230)	1,7 (0,10)	0,9 (55)	½"BSP	½"BSP
UNICUB-F	1:107	655 (9500)	1,1 (0,07)	0,6 (36)	½"BSP	½"BSP
UNICUB-G	1:164	982 (14250)	0,7 (0,04)	0,4 (24)	½"BSP	½"BSP

Air connection: ¼ "BSP, Weight , 5,5 Kg, Max. Air consumption: 0,4 Nm3/min



MK7



UNICUB

MK7

Model	Ratio	MWP in bar (psig)	Volume/stroke cc(in3)	Capacity ltr/min(in3/min)	Liquid inlet connection	Liquid outlet connection
MK7-4	1:4	27 (390)	160 (9,72)	37 (2260)	1"BSP	¾"BSP
MK7-9	1:9	60 (870)	70 (4,32)	23 (1400)	1"BSP	¾"BSP
MK7-13	1:13	90	50 (2,85)	15 (915)	¾"BSP	¾"BSP
MK7-19	1:19	275 (3990)	34 (2,04)	11 (670)	¾"BSP	½"BSP
MK7-28	1:28	430 (6230)	23 (1,37)	7,3 (455)	¾"BSP	½"BSP
MK7-36	1:36	240 (3480)	18 (1,08)	5,8 (354)	¾"BSP	½"BSP
MK7-54	1: 54	370 (5360)	12 (0,71)	3,8 (230)	½"BSP	½"BSP
MK7-76	1:76	520 (7540)	8 (0,51)	2,8 (170)	½"BSP	½"BSP
MK7-113	1:113	770 (11160)	6 (0,34)	1,8 (110)	½"BSP	½"BSP

MK7-145	1:145	980 (14210)	4 (0,27)	1,5 (91)	½"BSP	½"BSP
MK7-256	1:107	1740 (25230)	2,5 (0,15)	0,84 (51)	½"BSP	3/8"HP
MK7-368	1:164	2410 (35000)	1,7 (0,104)	0,58 (35)	½"BSP	3/8"HP

Air connection:1/2"BSP, Weight 8 Kg, Air consumption, Max.1 Nm3/min.

AIRDRIVEN LIQUID SYSTEM APU UNICUB

Model	Ratio	MWP in bar (psig)	Volume/stroke cc(in3)	Capacity ltr/min(in3/min)	Liquid inlet connection	Liquid outlet connection
APU-UNICUB-A	1:4	26 (371)	28 (1,68)	14 (850)	½" BSP	½" NPT
APU-UNICUB-B	1:11.9	70 (1010)	10 (0,607)	5 (305)	½" BSP	½" NPT
APU-UNICUB-C	1:22	157 (2280)	4,5 (0,269)	2,4 (146)	½" BSP	½" NPT
APU-UNICUB-D	1:39	275 (3990)	2,5 (0,151)	1,4 (85)	½" BSP	½" NPT
APU-UNICUB-E	1:61	430 (6230)	1,7 (0,105)	0,9 (55)	½" BSP	½" NPT
APU-UNICUB-F	1:93	655 (9500)	1,1 (0,067)	0,6 (36)	½" BSP	½" NPT
APU-UNICUB-G	1:141	982 (14250)	0,4 (0,044)	0,4 (24)	½" BSP	½" NPT

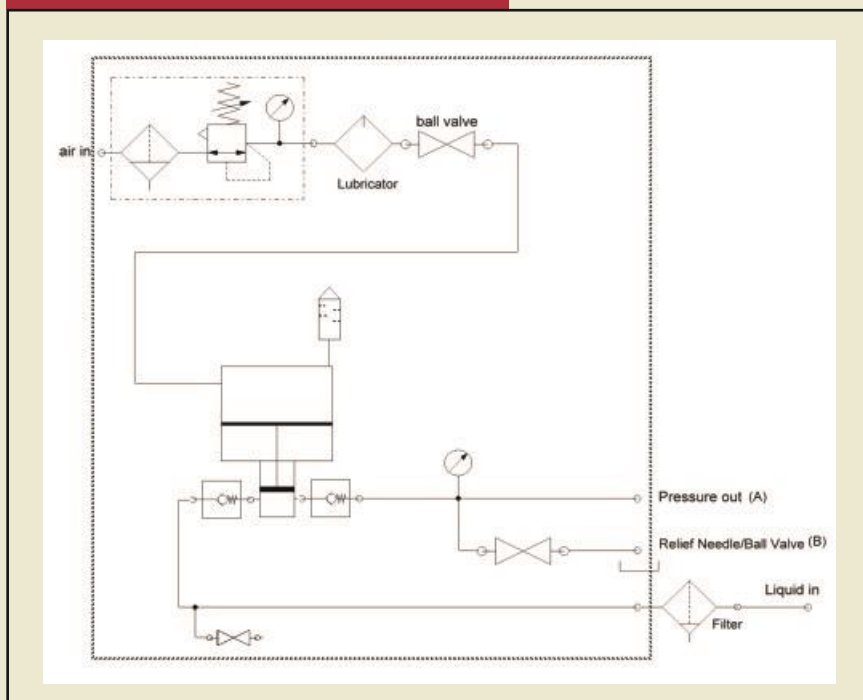
Air connection: ¼" BSP.

SIZE IN MM

Length	Width	Height	Weight Kg
400	240	300	15



SCHEMATIC PLAN



AIRDRIVEN LIQUID SYSTEM APU MK7

Model	Ratio	MWP in bar	(MWP psi)	Capacity ltr/min(in3/min)	Liquid inlet connection	Liquid outlet connection
APU-MK7-4	1:4	26 (371)	160 (9,72)	37 (2260)	1" BSP	½" NPT
APU-MK7-9	1:19	70 (1010)	70 (4,32)	23 (1400)	1" BSP	½" NPT
APU-MK7-13	1:13	157 (2280)	50 (2,85)	15 (915)	¾" BSP	½" NPT
APU-MK7-19	1:19	275 (3990)	34 (2,04)	11 (670)	¾" BSP	½" NPT
APU-MK7-28	1:28	430 (6230)	23 (1,37)	7,3 (455)	¾" BSP	½" NPT
APU-MK7-36	1:36	240 (3480)	18 (1,08)	5,8 (354)	¾" BSP	½" NPT
APU-MK7-54	1: 54	370 (5360)	12 (0,71)	3,8 (230)	½" BSP	½" NPT
APU-MK7-76	1:76	520 (7540)	8 (0,51)	2,8 (170)	½" BSP	1/2NPT
APU-MK7-113	1:113	770 (11160)	6 (0,34)	1,8 (110)	½" BSP	1/2NPT
APU-MK7-145	1:145	980 (14210)	4 (0,27)	1,5 (91)	½" BSP	1/2NPT
APU-MK7-256	1:256	1740 (25230)	2,5 (0,15)	0,84 (51)	½" BSP	M16 x 1,5
APU MK7-368	1:368	2410 (35000)	1,7 (0,104)	0,58 (35)	½" BSP	M16 x 1,5

Air Inlet ½" BSP

SIZE IN MM

Length	Width	Height	Weight Kg
500	300	370	23

